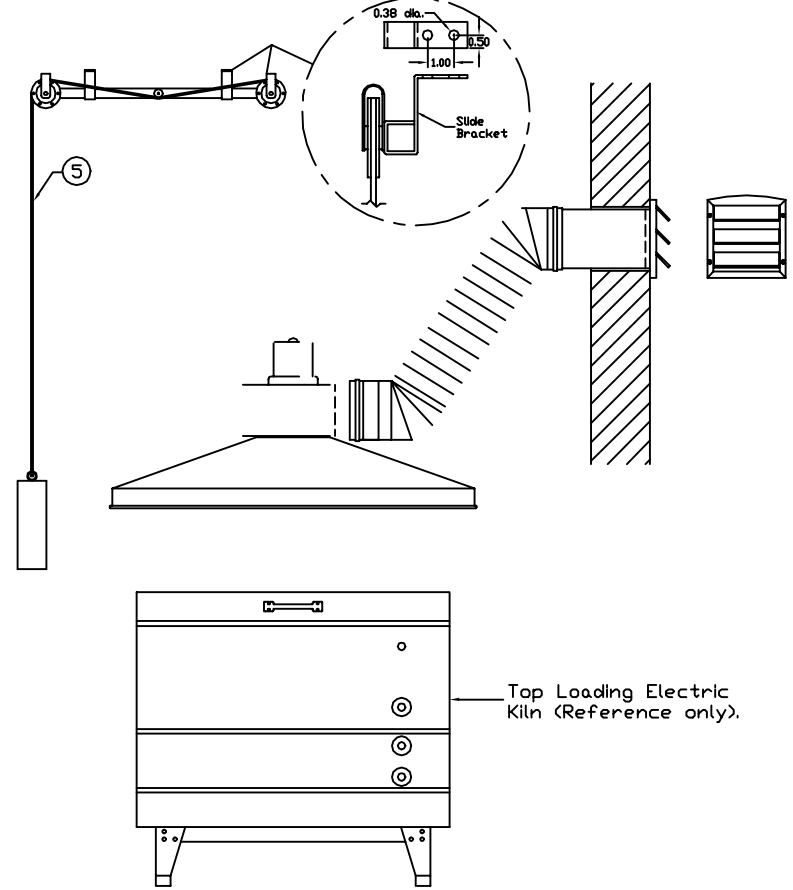


Model: 1227/500, 1332/500 & 1437/500 Specifications

The Vent-A-Kiln model 1227/500, 1332/500 & 1437/500 ventilation system shall include a conical metal spun aluminum hood tapering to a 6.0" diameter exit. A two speed motor with fan (blower) mounted on top the hood, shall draw and propel exhaust fumes and heat via a flexible hose to a exterior surface mounted gravity operated louver. The placement of the hood and blower subassembly shall be user adjustable via an overhead pulley and counterweight system.

- 1) Conical collection hood:
 - Metal spun from 0.063 gage aluminum, alloy 1100-0.
- 2) Non-explosion proof blower (two speed):
 - $\frac{1}{8}$ hp, 1/60/115 motor.
 - Low speed; 400 cfm @ 0.0" w.g., 2.3 amps, 1500 rpm.
 - High speed; 450 cfm @ 0.0" w.g., 3.6 amps, 1600 rpm.
 - Maximum continuous motor Temperature 250 deg. f..
 - Sound data; approximate db at 5 feet: high 68db, low 54db.
- 3) Flexible exhaust hose:
 - Triple ply laminate, aluminized polyester face and an aluminum foil backing.
 - Corrosion, moisture, temperature (250 deg. f.), and flame resistant.
 - 6.0" diameter, 10' (ft.) length.
 - Flexible hose fastened by plastic hose clamps (qty=2).
 - UL listed number 723.
 - Cut to shortest length permissible.
- 4) Exterior surface mounted louver:
 - 6.0" diameter discharge.
 - Bird screen.
 - Three (3) gravity operated shutters.
- 5) $\frac{3}{16}$ " diameter plastic coated steel cable:
 - 10' (ft.) length.
 - Two (2) $\frac{3}{16}$ " galvanized steel cable clamps for fastening cable to counterweight and blower.
- 6) Counterweight:
 - 3.0' diameter cold rolled steel, painted VAF/VAK black.
- 7) Overhead pulley system:
 - 1.0"x1.0"x24.0" length structural tubing.
 - two (2) ball bearing pulleys and one (1) resistance pulley.
 - Two (2) slide brackets for hanging of system.
 - two (2) pulley safety straps.



All Dimensions Inches

				UNLESS SHOWN OTHERWISE TOLERANCES SHOULD BE: 1.) .XXX ± .005 2.) .XX ± .01 3.) FRACTIONAL DIMENSIONS ± 1/32" 4.) ANGLES ± 0' 30"		PROJECT NUMBER XXX DATE 4/3/07 SCALE NTS NEXT ASS'Y		DRAWN B. Brandon CHECKED BY BILL OF MAT'L	
				ALL INFORMATION CONTAINED HEREIN IS PROPRIETARY, AND MUST NOT BE REPRODUCED OR MADE PUBLIC WITHOUT WRITTEN CONSENT FROM Vent-A-Fume/Vent-A-Kiln Corp.		TITLE: Model: 1227/500, 1332/500 1437/500 (P-10 Blower)		DWS. NO. B-1214 REV.	
LETTER	ALTERATION	DATE	BY						

Vent-A-Fume
 Vent-A-Kiln Corp.
 51 Botsford Place
 Buffalo, N.Y. 14216

Positive Pressure